

AVAILABLE  
FROM OCTOBER

WSEI



JOIN & LIVE WITH US

## DEAR STUDENTS!

WE ARE DELIGHTED TO PRESENT YOU THE NEW LUXURY SCHOOL APARTMENTS AT UNICKA STREET, AVAILABLE FOR THE NEW ACADEMIC YEAR IN OCTOBER 2014.

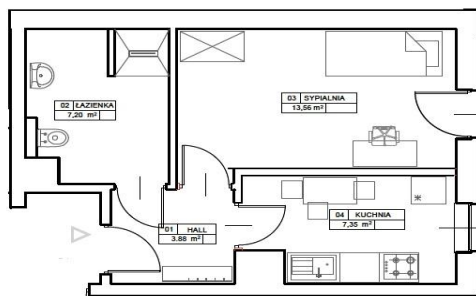


THE FLATS FOR RENT INCLUDES ONE, TWO, THREE OR FOUR ROOMS IN, PLACED UPON SIX FLOORS IN FOUR STAIRCASES IN THE MODERN BUILDING. WE OFFER SINGLE, DOUBLE AND

TRIPLE ROOMS. EACH FLAT HAVE ITS OWN KITCHEN OR KITCHEN UNIT, ONE OR TWO BATHROOMS AND TOILETS, COMMON HALLWAY AND 1 UP TO 4 ROOMS.

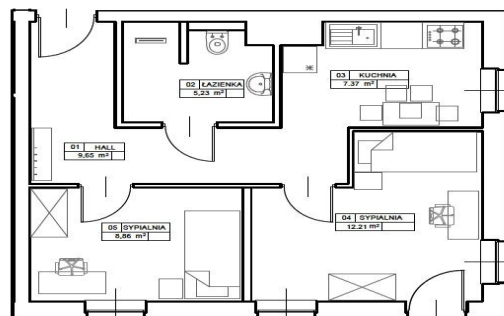
## SINGLE ROOM FLAT

Rzut mieszkania 1 pokojowego

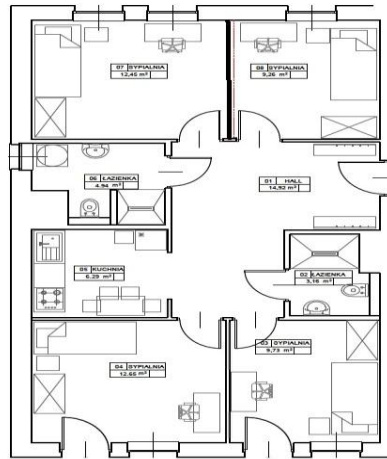


## DOUBLE ROOM FLAT

Rzut mieszkania 2 pokojowego

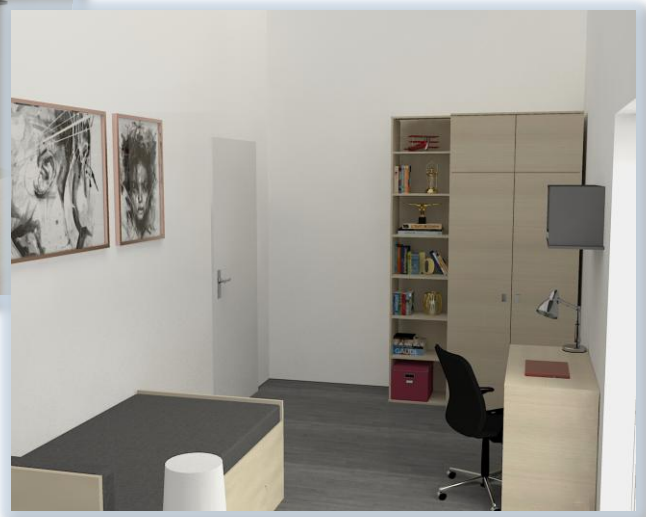
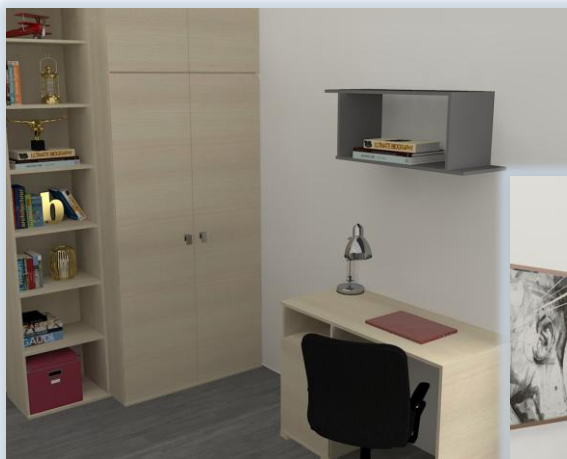


## FOUR ROOMS FLAT



Rzut mieszkania 4 pokojowego

THE BUILDING WILL HAVE 94 FLATS WITH 218 ROOMS, WHICH CAN HOST UP TO ROUND 300 STUDENTS/PEOPLE.



THE KITCHEN IS EQUIPPED IN VARIOUS COMPONENTS SUCH AS:

- HIGH QUALITY KITCHEN FURNITURE CONSISTS OF THREE STANDING AND THREE HANGING CUPBOARDS
- MODERN INDUCTION HOB
- GRANITE SINK UNIT WITH PLACE TO LEAVE DISHES TO DRY
- HIGH CLASS SUPPLIER REFRIGERATOR
- VENTILATION HOOD
- MICROWAVE/OVEN
- KITCHEN TABLE AND STOOLS/CHAIRS
- KITCHEN EQUIPMENT: CUTLERY, POTS AND PANS, TABLEWARE, GLASSES AND CUPS AND MOP FOR THE FLOOR.



EACH BATHROOM IS FINISHED IN THE LIGHT BEIGE TILES. WE USED HIGH 5-STARS HOTEL SOLUTIONS LIKE: TUCKED-IN-WALLS MIRRORS, NO PADDLING POOL WITH STRAIGHT-LINE DRAIN HOLES, GLASS DOORS TO SHOWER UNITS, HANGED TOILET BOWLS ETC. EACH BATHROOM HAS A SPECIALLY DESIGNED TOILET CUPBOARD AND A COMPLETE SET OF HANGERS AND HANDLES.

IN THE HALLWAYS WE PUT SPECIALLY DESIGNED WARDROBE UNITS WITH MIRRORS FOR OUTDOOR CLOTHING AND SHOES. EVERY FLAT HAVE OWN IRONING BOARD AND OWN IRON WITH AUTOMATIC SWITCH-OFF SYSTEM.

WHAT MATTERS THE MOST FOR THE CONVENIENCE OF FUTURE RENTERS WE OFFER THE ROOMS EQUIPPED IN:

- COMFORTABLE STRENGTHEN AND SOLIDLY FINISHED BED WITH UPHOLSTERED HEADBOARD AND A CHEST FOR BEDLINEN AND COVERING.
- THE WARDROBE WITH HANGER'S SHELVES AND TOP UNIT FOR CLOTHES.
- HIGH BOOKSHELF WITH ADJUSTABLE HEIGHT OF SHELVES.
- FUNCTIONAL DESK WITH DESK-CUPBOARD AND A SWIVEL CHAIR.
- BEDSIDE TABLE AND HANGING DOUBLE SHELVES FOR MOTLEY CREW.

THE ROOMS WILL BE FINISHED WITH HIGH-CLASS MATERIALS, WE USED BLINDS ON THE WINDOWS. TO EACH BED WE ADDED A COMPLETE BED SET AND OWN BEDLINEN.

AT OUR RENTERS DISPOSAL WE PREPARED WI-FI AT STANDARD SPEED OF ROUND 3 MB, WITH POSSIBILITY TO INCREASE IT IF REQUIRED.

THE PROPERTY IS MONITORED BY A DOZEN CAMERAS AND DIGITALLY RECORDED, OUTSIDE THE BUILDING AS WELL INSIDE ON THE STAIRCASES AND ELEVATORS. WE OFFER MANAGEMENT IN DAYTIME TO ALL OUR RESIDENTS. AND AFTER HOURS WORK OF MANAGEMENT IN THE BUILDING WILL BE SECURITY STAFF.



MODERN PLACE ESPECIALLY FOR  
YOU

FOR THE CONVENIENCE TO OUR RESIDENTS WE USED A SPECIAL SYSTEM OF INTELLIGENT KEY – ONE KEY TO THE STAIRCASE, TO THE FLAT AND TO THE ROOM. TO ENSURE THAT NOBODY UNAUTHORIZED OR NOT RESIDENT WE USED AS WELL MONITORING SYSTEM, SECURITY OFFICIAL SUPERVISION AND INTERCOM. OUR GUESTS WILL SURELY FEEL SAFE AND COMFORTABLE.

THE PROPERTY HAS ITS OWN UNDERGROUND PARKING FOR GUEST WITH CARS OR BIKES. IN THE DOWN STOREY WE PLACED THE LAUNDRY ROOM EQUIPPED WITH PROFESSIONAL WASHING MACHINES AND DRYERS. ON THE GROUND FLOOR WE OFFER A COMMON AREA THAT CAN BE USED FOR COFFEE BREAK ROOM, READING ROOM OR A PLACE TO STUDY. WE HOPE THAT THE EXCELLENT LOCATION RIGHT NEXT TO BUS STOPS AND CLOSE DISTANCE TO MEDICAL UNIVERSITY WILL MAKE THIS OFFER THE BEST CHOICE FOR STUDENTS FOR YEARS.

